

CAPRI BEAUTY LINE COLLE CTION



Self International System Srl
Via Vigna del Piano, 44
00060 Riano - Roma - Italy

Numero Verde
800-271525



CAPRI
BEAUTY LINE

COSMESI MEDITERRANEA

3P-FREE

PARAFFIN
PETROLATUM
PARABEN

FACE

BODY



PROBIOTIC COMPLEX

P = Professional
H = Home Use



**CODICE
PRODOTTI**

- H 51190 Bifasic Micellar Water - 200 ml
- H 51191 Antioxidant Probiotic Cream - 50 ml
- H 51192 Protective - Probiotic Face Serum - 30 ml

**PROBIOTIC BB CREAM 6 IN 1 - MOISTURIZING - MATTIFYING
PROTECTIVE - EQUALISING WITH SUNSCREEN 50 ML**

- H 51193 Probiotic Bb Cream 6 In 1 / MEDIUM LIGHT 50 ml
- H 51194 Probiotic Bb Cream 6 In 1 / MEDIUM 50 ml
- H 51195 Probiotic Bb Cream 6 In 1 / GOLDEN 50 ml
- H 51197 Probiotic Body Cream - 250 ml

PROBIOTIC LINE PROTECTIVE - MOISTURIZING - ANTI AGE ANTI-OXIDANT FOR ALL TYPES OF SKIN

Innovative formulation based on Prebiotics useful for improving and strengthening the cutaneous microbiota, that is, good bacteria that improve the epidermal defense system. The line works by improving skin hydration, giving relief to the most sensitive and reactive skin, inhibiting growth of bacteria responsible for acne and oily skin and slowing down skin aging.

ACTIVE INGREDIENTS

PREBIOTICS - COENZYME Q10
GRAPE STEM CELLS
ACTIVE MARINE EXTRACTS - COCOA
KIGELIA AFRICAN - GRAPEFRUIT

FACE



ORANGE BLUE



ANTI-OXIDANT ANTI-WRINKLE LINE

Created for the solution of wrinkles, oxidation and dehydration of the skin, the Orange Blue line is able to effectively fight wrinkles with a remarkable antioxidant effect, super-moisturizing and remineralizing.

**CODE
PRODUCTS**

- P 51001 Anti-Wrinkle Antioxidant Cleansing Milk - 400 ml
- H 51002 Anti-Wrinkle Antioxidant Cleansing Milk - 200 ml
- P 51003 Anti-Wrinkle Antioxidant Cleansing Tonic Lotion - 400 ml
- H 51004 Anti-Wrinkle Antioxidant Cleansing Tonic Lotion - 200 ml
- P 51005 Anti-Wrinkle Antioxidant Cleansing Cream - 250 ml
- H 51006 Anti-Wrinkle Antioxidant Cleansing Cream - 50 ml
- P 51008 Anti-Wrinkle Antioxidant Cleansing Mask - 250 ml
- H 51009 Anti-Wrinkle Antioxidant Cleansing Mask - 100 ml
- H 51007 Anti-Wrinkle Antioxidant Cleansing Serum - 30 ml
- P 51010 Anti-Wrinkle Antiox. - Active Concentr. 12 ampoules x ml 10

ACTIVE INGREDIENTS

HYALURONIC ACID - COLLAGEN
VITAMIN C - BERRIES OF GOJI - DMAE

FACE



INFINITY PERFECT LIFT



RE-PLUMPING FACE LINE BOTOX LIKE

The Infinity Perfect Lift line acts effectively and permanently on three dimensions of the face: it relaxes wrinkles, plumps the contours of the face, tightens and moisturizes the epidermis. Its lifting and moisturizing properties guarantee an immediate result of firmness and turgidity with long lasting effects.

**CODICE
PRODOTTI**

- P 51021 Re-Plumping Cleansing Milk Botox Like - 400 ml
- H 51022 Re-Plumping Cleansing Milk Botox Like - 200 ml
- P 51023 Re-Plumping Tonic Botox Like - 400 ml
- H 51024 Re-Plumping Tonic Botox Like - 200 ml
- P 51025 Re-Plumping Cream Botox Like - 250 ml
- H 51026 Re-Plumping Cream Botox Like - 50 ml
- P 51027 Re-Plumping Mask Botox Like - 250 ml
- H 51028 Re-Plumping Mask Botox Like - 100 ml
- H 51029 Re-Plumping Serum Botox Like - 30 ml
- P 51030 Re-Plump. Active Concentrate Botox Like 12 ampoules x ml 10

ACTIVE INGREDIENTS

HYALURONIC ACID MICROSPHERES
ACTIVE PEPTIDE BOTOX LIKE
EXTRACT OF RED VINE - COLLAGEN
NMF FACTOR - DMAE



NEW SKIN Sy-STEM CELLS

P = Professional
H = Home Use



REVITALIZING ILLUMINATING FACE LINE WITH STEM CELLS OF RED GRAPE AND SWISS APPLE

Indicated for rejuvenation and tissue repair treatments, this line is formulated with Plant Stems cells of Apple Switzerland and Red Grape, which in synergy with the other assets of the line, stimulate cellular reproduction with anti-aging, anti-wrinkle, illuminating and revitalizing effects.

CODE PRODUCTS

- P 51031 Revitalizing Illuminating Cleansing Milk - 400 ml
- H 51032 Revitalizing Illuminating Cleansing Milk - 200 ml
- P 51033 Revitalizing Illuminating Tonic - 400 ml
- H 51034 Revitalizing Illuminating Tonic - 200 ml
- P 51035 Revitalizing Illuminating Cream - 250 ml
- H 51036 Revitalizing Illuminating Cream - 50 ml
- P 51037 Revitalizing Illuminating Mask - 250 ml
- H 51038 Revitalizing Illuminating Mask - 100 ml
- H 51039 Revitalizing Illuminating Serum - 30 ml
- P 51040 Active Concent. Revital. Illuminating Action 12 ampoules x ml 10

ACTIVE INGREDIENTS

STEM CELLS OF RED GRAPE AND SWISS APPLE
- VITAMIN PP - VITAMIN C - EXTRACT OF GREEN
THEES - ELASTIN - TETRAPEPTIDE-21



ANTI AGING



OXYGENATING RENEWING LINE

This line, based on Caviar and Retinol, is effective on all skins that show an off appearance due to poor oxygenation. It promotes the acceleration of cell renewal, helping to stimulate the creation of new cells. The skin, free to breathe, regains a healthy appearance, through the exclusive mix of Amino Acids and Oligoelements.

CODE PRODUCTS

- P 51050 Oxygenating Renewing Cleansing Milk - 400 ml
- H 51051 Oxygenating Renewing Cleansing Milk - 200 ml
- P 51052 Oxygenating Renewing Tonic Lotion - 400 ml
- H 51053 Oxygenating Renewing Tonic Lotion - 200 ml
- P 51054 Oxygenating Renewing Cream - 250 ml
- H 51055 Oxygenating Renewing Cream - 50 ml
- P 51056 Oxygenating Renewing Mask - 250 ml
- H 51057 Oxygenating Renewing Mask - 100 ml
- H 51058 Oxygenating Renewing Serum - 30 ml
- P 51059 Oxygen. Renewing Active Concentr. 12 ampoules x ml 10

ACTIVE INGREDIENTS

CAVIAR - RETINOL - VITAMIN E
VITAMIN PP - RED SCREW
HYALURONIC ACID - NMF
MARINE COLLAGEN
COENZYME Q10



EXTRA ENERGY



SUPER MOISTURIZING VITAMINIZING LINE

The Extra Energy line restores altered skin hydration and compensates the deficiencies of vitamins A, C and E through an intensive moisturizing and nourishing action, offering a valid solution for dry and dehydrated skin of any age.

CODE PRODUCTS

- P 51060 Super Moisturizing Cleansing Milk - 400 ml
- H 51061 Super Moisturizing Cleansing Milk - 200 ml
- P 51062 Super Moisturizing Tonic Lotion - 400 ml
- H 51063 Super Moisturizing Tonic Lotion - 200 ml
- P 51064 Super Moisturizing Cream - 250 ml
- H 51065 Super Moisturizing Cream OVER 40 - 50 ml
- H 51066 Super Moisturizing Gel Cream - 50 ml
- P 51067 Super Moisturizing Mask - 250 ml
- H 51068 Super Moisturizing Mask - 100 ml
- H 51069 Super Moisturizing Serum - 30 ml
- P 51070 Super Moisturizing Active Concentrates - 12 amp. x ml 10

ACTIVE INGREDIENTS

VITAMIN A-C-E - GREEN TEA EXTRACT,
HYALURONIC ACID - NMF - COLLAGEN
PANTHENOL - GINSENG - CYCLODEXTRINS



SENSITIVE SKIN

P = Professional
H = Home Use



SOOTHING DECONGESTANT LINE

Specific for delicate, reactive skin, prone to couperose and capillary fragility, the Sensitive Skin line is able to soothe, decongest, mitigate redness and give lasting comfort to the skin of the face. Soothes and decongests reddening, moisturizes, nourishes, tones tissues, protects from damage caused from sun exposure and has a softening and lightening action thanks to the Alpha Bisabolol.

CODE PRODUCTS

- P 51071 Soothing Decongestant Cleansing Milk - 400 ml
H 51072 Soothing Decongestant Cleansing Milk - 200 ml
- P 51073 Soothing Decongestant Tonic Lotion - 400 ml
H 51074 Soothing Decongestant Tonic Lotion - 200 ml
- P 51075 Soothing Decongestant Cream - 250 ml
H 51076 Soothing Decongestant Cream - 50 ml
- P 51077 Soothing Decongestant Mask - 250 ml
H 51080 Soothing Decongestant Mask - 100 ml
- H 51078 Soothing Decongestant Serum - 30 ml
- P 51079 Soothing Protective Active Concentr. 12 ampoules x ml 10

ACTIVE INGREDIENTS

CALENDULA - ALOE VERA - CHAMOMILE
GLYCYRRHETIC ACID BETA
BISABOLOL - HYPERIC



OILY SKIN



SEBUM-BALANCING PURIFYING MATTIFYING LINE

This line provides an effective, and in many cases decisive, answer to solve the problem of oily, greasy, shiny skin with blackheads and pre-acne. The high concentration of its active ingredients purifies, disinfects and helps to blur the skin making it silky and smooth.

CODE PRODUCTS

- P 51081 Sebum Balancing Cleansing Gel - 400 ml
H 51082 Sebum Balancing Cleansing Gel - 200 ml
- P 51083 Sebum Balancing Tonic Lotion - 400 ml
H 51084 Sebum Balancing Tonic Lotion - 200 ml
- P 51085 Purifying Control Cream - 250 ml
H 51086 Purifying Control Cream - 50 ml
- P 51087 Sebum Balancing Clay Mask - 250 ml
H 51088 Sebum Balancing Clay Mask - 100 ml
- P 51089 Sebum Bal. Opacifiers Active Concentr. 12 ampoules x ml 10

ACTIVE INGREDIENTS

GRAPEFRUIT - BEECH
ACTIVE MARINE EXTRACTS - CARNITINE



INTENSE SKIN CARE



FINISHING LINE

Line that includes a series of products, including fillers, serums, creams, with the aim not only to enhance and / or complete the results achieved in the cabin, but in some cases also to intervene more specifically integrating and personalizing the various treatments.

CODE PRODUCTS

- H 51155 Botox Like Punctual Lip Contour Filler - 20 ml
H 51157 Relaxing Wrinkle Filler Eye Contour Like Botox - 20 ml
H 51160 Punctual Hyaluronic Acid Filler Corrective Actions - 20 ml
H 51165 Anti-Wrinkle Filler Instant Action Botox Like - 20 ml
- H 51158 Bags and Swelling Eye Contour Gel Mask
+ 25 small mask for Eye - 30 ml
- H 51161 Lightening Anti-spot Serum - 30 ml
H 51162 Lightening Anti-spot Cream with Lactobionic Acid - 50 ml
- H 51164 Eye Contour Cream with Gold and Collagen - 15 ml

ACTIVE INGREDIENTS

PHYTOCOMPLEXES - CYCLODEXTRINS - COLLAGEN
HYALURONIC ACID MICROSPHERES
AZELAIC ACID - MALIC ACID
COGIC AND LACTOBIONIC ACID



OVER BOOST FACE

P = Professional
H = Home Use



CODE PRODUCTS

- P 51101 Revitalizing Concent. with Hyalur. Acid 12 ampo. x ml 10
P 51102 Super Moisturizing Concent. with Collagen 12 ampo. x ml 10
P 51103 Revitalizing Hyaluronic Acid - Woven Masks 10 pcs. x ml 35
P 51104 Super Moisturizing Collagen - Woven Masks 10 pcs. x ml 35

ULTRA ENHANCEMENT LINE

The Over Boost line represents the top of the Capri Beauty Line range, which was born to increase effectiveness and increase the effects of other interventions on different types of skin and blemishes.

The line includes a series of products with the aim of integrating more specifically intervene and customizing the various treatments with fleeces and active concentrates of Collagen and Hyaluronic Acid.

ACTIVE INGREDIENTS

COLLAGEN
HYALURONIC ACID



BASIC LINE FACE



CODE PRODUCTS

- H 51169 Two-Phase Make-Up Remover for normal and Combination Skin - 200 ml
H 51170 Eye Makeup Remover Gel - 200 ml
P 51171 Smoothing Exfoliating Gel - 250 ml
P 51172 Exfoliating - Purifying Scrub with Apricot Microgranules and Sweet Almond Oil - 250 ml
H 51173 Exfoliating - Purifying Scrub with Apricot Microgranules and Sweet Almond Oil - 100 ml

PREPARATION AND CLEANING FACE LINE

The Basic Line line includes a series of professional cosmetics to be used in the cleansing phases, tonification, and both mechanical and enzymatic exfoliation, in synergy with the specific products of the Capri Beauty Line, depending on the type of skin to be treated. They act with sweetness and effectiveness thanks to the action of highly functional, biotechnological and last generation active ingredients.

ACTIVE INGREDIENTS

APRICOT MICROGRANULES
MALIC ACID - CRANBERRY
AMAMELIDE - ALOE VERA



CAPRI FACE MASK



CODE PRODUCTS

- H 51181 Black Mask box with 10 single dose peel off mask 10 ml
H 51182 Gold Mask box with 10 single dose peel off mask 10 ml
H 51183 Silver Mask box with 10 single dose peel off mask 10 ml
H 51184 Sensitive Mask box with 10 single dose peel off mask 10 ml

PEEL OFF MASKS

In the comfortable single-dose sachets, the innovative Peel Off masks with precious and refined active ingredients they satisfy every need and improve the imperfections of all skin types. A mask in cream that spreads on the face, is left to dry and then pulls away like a film. During the minutes of laying, the active ingredients penetrate deep into the epidermis and the upper occlusion allows make them absorb by preventing contact with the air and thus facilitating the assimilation of functional substances.

ACTIVE INGREDIENTS

GOLD - COLLAGEN - HYALURONIC ACID
ACTIVE PEPTIDE BOTOX LIKE
CHARCOAL - TEA TREE OIL
VITAMIN A - BERRIES OF GOJI
CHAMOMILE - RED VINE



MANDELIC COMPLEX



EXFOLIATION, WHITENING, ANTI-STAIN LINE WITH MANDELIC ACID

With an exfoliating, lightening, anti-stain, anti-wrinkle, antibacterial and regenerating action, the Mandelic Complex Line allows the sector of professional aesthetics, to have available so far exclusive means of medicine aesthetic, accompanying the excellent results with an undisputed functionality.

P = Professional
H = Home Use



CODE PRODUCTS

- P 54001 Mandelic Stop - Neutralizing Peeling - 400 ml
- P 54002 Mandelic Pre Peeling - 400 ml
- P 54003 Mandelic Lightening Peeling Acne and Wrinkle - 30 ml
- P 54004 Mandelic Anti-spot Exfoliating Peeling - 30 ml
- P 54005 Mandelic Exfoliating Anti-spot Mask - 250 ml
- P 54006 Mandelic Rebalancing Neutralizing Cream - 250 ml
- H 54014 Mandelic Rebalancing Neutralizing Cream - 50 ml
- H 54015 Mandelic Lightening Exfoliating Cream - 50 ml
- H 54016 Mandelic Anti-Wrinkle Cream - 50 ml
- H 54017 Mandelic Super Moisturizing Cream - 50 ml
- H 54018 Mandelic Biostimulating Renewing Cream - 50 ml
- H 54019 Mandelic Anti Aging Cream - 50 ml

ACTIVE INGREDIENTS

MANDELIC ACID - AZELAIC ACID
PHYTIC ACID - HYALURONIC ACID
GLYCOLIC ACID - VITAMINS E / A



DRENACTIVE



DRAINING AND SLIMMING BODY LINE

Drenactive allows to get 3 functions simultaneously with a single treatment:

- Purify the epidermis and eliminate toxins
- Drain excess fluids
- Visibly reduce the areas treated

The line is in fact to act and to stimulate the lymphatic system, helping and promoting elimination of waste and toxins, with deflating effect.

CODE PRODUCTS

- P 52051 Sea Salt Body Scrub - 500 ml
- P 52052 Active Concent. Draining and Slimming Action 12 amp. ml 15
- P 52053 Draining and Slimming - Gel Mask - 500 ml
- P 52054 Draining and Slimming - Cream - 500 ml
- H 52055 Draining and Slimming - Cream - 250 ml

ACTIVE INGREDIENTS

ESGIN - ASIATIC CENTELLA
BIRCH - IVY - CHESTNUT



CELLURID



INTEGRAL LINE FOR CELLULITE AND LOCALIZED FAT

An intensive professional treatment, ideal to counteract skin imperfections caused by cellulite and localized fat.

The activities that the Cellurid line performs as a whole are: drainage and expulsion of liquids, reactivation of circulation, mobilization of fats, lipolytic and vasoprotective action. It fights the causes of the stagnation of liquids, favors a gradual reduction of the localized centimeters and acts as a powerful lipo-reducer.

CODICE PRODOTTO

- P 52010 Slimming Thermo-active Concentrate - 12 amp. ml 15
- P 52011 Thermo-active Gel - Cellulite - 500 ml
- P 52012 Specific Cellulite Cream - Reducing Effect - 500 ml
- H 52013 Specific Cellulite Cream - Reducing Effect - 250 ml

ACTIVE INGREDIENTS

FUCUS SEAWEED - GINKGO BILOBA
CHESTNUT - THYME - CAFFEINE
CARNITINE - GREEN TEA



PERFECT BODY SOYA SYSTEM

P = Professional
H = Home Use



TREATMENT WITH ISOFLAVONES SOY ULTRA REDUCING MODELLING TOTAL BODY

Drain, reduce, shape. These are the basic steps for a correct reducing treatment. The line consists of a series of products formulated with Soy Isoflavones and reducing and modeling draining actives ingredients, to offer a treatment of undisputed effectiveness, suitable also for those suffering from thyroid disorders, non-thermo-active and multifunctional.

CODE PRODUCTS

- P 52030 Active Concentr. - Draining and Firming Action 12 amp. ml 15
- P 52031 Active Concentrate - Slimming Action - 12 amp. ml 15
- P 52032 Active Concent. Elasticizing - Firming Action - 12 amp. ml 15
- P 52035 Slimming Firming Gel - 500 ml
- P 52036 Slimming Firming Cream - 500 ml
- H 52037 Slimming Firming Cream - 250 ml

ACTIVE INGREDIENTS

SOY ISOFLAVONES
ASIATIC CENTELLA
ESGIN - CARNITINE
BITTER ORANGE - CAFFEINE
LECITHIN - AFRICAN KIGELIA
HYDROLIZED ELASTIN - VITAMIN C



UP & FIRMING



FIRMING TONIFYING BODY LINE

The Up & Firming line is a specific professional treatment for hips, abdomen, arms, legs and thighs. Active antioxidants, elasticizing, restructuring, draining and toning, are a valid system to prevent and gradually reduce the problem of atony and sagging skin.

CODE PRODUCTS

- P 52061 Active Concentrate Firming Action - 12 ampoules ml 15
- P 52062 Body Firming - Gel Mask - 500 ml
- P 52063 Body Firming - Cream - 500 ml
- H 52064 Body Firming - Cream - 250 ml

ACTIVE INGREDIENTS

SOY LECITHIN
ACID ALPHA LIPOIC - COLLAGEN
ELASTIN - AFRICAN KIGELIA



EXTRA PERFORMANCE



BREAST - STRETCH MARKS - TOTAL BODY LINE

The Extra Performance line includes a wide range of particularly active products, which simultaneously perform different functions, aimed at accelerating the results of treatments.

We propose innovative and powerful active ingredients such as Phosphatidylcholine, which literally dissolves adipose accumulations, and traditional ones that offer results that are still challenging the research in the discovery of viable alternatives.

CODE PRODUCTS

- P 52071 Firming Volumizing Breast Cream - Lifting Effect - 250 ml
- P 52072 Firming Volumizing Breast - Active Concentrates - Lifting Effect - 12 ampoule ml 10
- P/H 52073 Firming Volumizing Breast Serum - Lifting Effect - 30 ml
- P 52074 Smoothing Lightening Stretch Marks - 250 ml
- P/H 52075 Smoothing Lightening Fluid - Stretch Marks - 30 ml
- H 52076 Body Cream 3 in 1 Moistur. Firming Elasticizing - 250 ml
- H 52078 Reducing/Drain. Thermo-active Cream - Hot-Cold - 250 ml
- P 52079 Reducing/Drain. Thermo-active Cream - Hot-Cold - 500 ml
- H 52080 Phosphatidylc. Lipolytic Fluid for Fat and Cellulite - 200 ml

ACTIVE INGREDIENTS

SOYA LECITHIN - ACID ALPHA LIPOIC
COLLAGEN - ELASTIN
KIGELIA AFRICAN - PHOSPHATIDYLCHOLINE



READY BENDAGES AND GEL

The Contour Line of the Capri Beauty Line is dedicated to the specific use of cosmetic bandages, with ready-to-use bandages, already soaked with active serums, liposolvent oils and active ingredients of undisputed functionality, to perform different types of treatments. Excellent results are obtained in combating various types of imperfections, such as fibrous cellulite, edematous cellulitis and reactivating tone and elasticity with elastic firming elastic bandages.

CODE PRODUCTS

- P 52081 Ready Hot Bandage - Fibrous Cellulite - 2nd stage
2 Elastic Bandages of 7 m. in a bag 200 ml
- P 52082 Ready Cold Bandage - Oedematous Cellulite - 1st stage
2 Elastic Bandages of 7 m. in a bag 200 ml
- P 52083 Ready Hot / Cold Bandage - Firming Elasticity
2 Elastic Bandages of 7 m. in a bag 200 ml
- P 52086 Cold Gel - Firming - 500 ml
- P 52087 Warm Gel - Cellulite Thermo-active effect - 500 ml

ACTIVE INGREDIENTS

CHESTNUT - CRANBERRY - VITAMIN PP
NICOTINATE METHYL - ASIATIC CENTELLA
MENTHOL - CAMPHOR - EUCALYPTUS



BASIC LINE BODY



BODY CLEANING LINE

Before starting any treatment it is essential to thoroughly clean the skin to prepare it to receive the active products of the specific products used in the subsequent phases. Basic Body Line is a professional line formulated to free the skin from impurities and dead cells with delicacy and effectiveness, respecting the skin balance and leaving the skin soft and velvety.

CODE PRODUCTS

- P 52101 Exfoliating Moisturizing Scrub with
Cane Sugar and Sea Salt - 500 ml
- P 52102 Body Exfoliating Purifying Scrub
with Apricot Microgranules - 500 ml
- H 52103 Body Exfoliating Purifying Scrub
with Apricot Microgranules - 250 ml

ACTIVE INGREDIENTS

BROWN SUGAR
SEA SALT
APRICOT MICROGRANULES



TOTAL WELLNESS



BODY WELLNESS

As well as enjoying them in the Beauty Institute, in the Wellness Center or in the SPA, the Capri Beauty Line offers a wellness and home care program, to be used every day. The Total Wellness line offers a wide range of cosmetics for daily self-care, synergistic and alternative to each other, targeted to high personalization, extremely pleasing and effective, in perfect harmony with the needs of the modern woman.

CODE PRODUCTS

- P 53010 Moisturizing, Anti-aging Hand Cream - 500 ml
- H 53015 Moisturizing, Anti-aging Hand Cream - 100 ml
- P 53011 Relaxing Anti Odor - Foot Cream - 500 ml
- H 53016 Relaxing Anti Odor - Foot Cream - 100 ml
- H 53012 Cold Gel Legs - Winding - Down Stimulating - 250 ml
- H 53013 Moisturizing Body Milk - Shea Butter - 250 ml
- H 53014 Anti-aging Fluid Cream - 200 ml

ACTIVE INGREDIENTS

KARITÉ BUTTER - COLLAGEN
CAMPHOR - COENZYME Q10
HYALURONIC ACID



MUD AND DEAD SEA SALTS

Capri Beauty Line offers a range of muds, designed to resolve the unsightly appearance of cellulite and to aid firming, toning, draining and slimming, as well as the well-being of the epidermis in general. For the realization of this line active ingredients have been used chosen among the most effective and natural proposals offered by the cosmetological research. Complexes rich in vitamins, trace elements, mineral salts, protein supplements, mineralizing, antioxidants that have the properties to cleanse the body and improve metabolism.

CODE PRODUCTS

- P 53041 Slimming Lipolytic Thermoactive Mud - Dead Sea Salts 1000 ml
- P 53042 Draining, Firming Cold Mud - Dead Sea Salts 1000 ml
- P 53043 Reducing Cellulite, Athermic Mud - Dead Sea Salts 1000 ml

ACTIVE INGREDIENTS

GREEN CLAY - DEAD SEA SALTS
CAFFEINE - METILE NICOTINATE
ALGAE SPIRULINA - BIRCH - MENTHOL



CREAMS AND MASSAGE OILS

The art of massage is dedicated to tackling in the most personalized way not only the most widespread imperfections, such as cellulite, fat, atony, but also postural problems, contractures and blockages deriving from the accumulation of tension and stress. Capri Beauty Line Massage Oils and Creams are an invitation to rediscover customers the beauty of unique moments to devote to the care of their person.

CODE PRODUCTS

- P 53051 Rebalancing Basic Massage Oil - 500 ml
- P 53052 Relax Massage Oil - 500 ml
- P 53053 Slimming Cellulite Massage Oil - 500 ml
- P 53054 Rebalancing Basic Massage Cream - 500 ml
- P 53055 Rebalancing Basic Massage Cream - 500 ml
- P 53056 Slimming Cellulite Massage Cream - 500 ml

ACTIVE INGREDIENTS

SWEET ALMOND OIL
ARGAN OIL - CALENDULA
CHAMOMILE - LEMON BALM



MOISTURIZING SMOOTHING MINERALIZING ELASTICIZING LINE

The Algo Xerapy Line owes its products effectiveness to the use of precious substances extracted both from marine algae and terrestrial plants. Wisely mixed, you get prepared with strong revitalizing, detoxifying and stimulating properties of the lymphatic flow, as well as a special function in smoothing the skin and restoring softness, tone and elasticity. The sea depths offer a real cosmetic "treasure" of which this line uses: the Algae.

CODE PRODUCTS

- P 53031 Algo Smoothing Cream - Super Moisturizing - 500 ml
- P 53032 Algo Mineralizing Mask Elasticizing - 500 ml
- P/H 53033 Algo Mineralizing Fluid Elasticizing - 30 ml
- P 53034 Algo Mineralizing Cream Elasticizing - 500 ml
- H 53035 Algo Mineralizing Cream Elasticizing - 250 ml

ACTIVE INGREDIENTS

RED AND BROWN SEAWEEDES
SPIRULINA ALGAE
LAMINARIA ALGAE - N.M.F.



EXENTIAL DROPS

P = Professional
H = Home Use



ESSENTIAL OILS AND DROPS

The Essential Drops represent one of the most beautiful gifts that nature has been able to offer us: precious, pure, exclusively natural oils, taken from the Mediterranean flora and from medicinal plants all over the world, without any addition of chemical substances. Capri Beauty Line has mixed these substances to make them usable and usable in the world of Cosmetics, Wellness Centers and SPAs. Combined with the experience of the professional, the Essential Drops complement and enhance the treatments in the aesthetic cabin.

CODE PRODUCTS

- P 53061 Synergies of Essential Oil - Cellulite - 30 ml
- P 53062 Synergies of Essential Oil - Draining - 30 ml
- P 53063 Synergies of Essential Oil - Anti Stress - 30 ml
- P 53064 Synergies of Essential Oil - Moisturizing - 30 ml

ACTIVE INGREDIENTS

ROSA - EUCALYPTUS - CHAMOMILE
BITTER ORANGE - LAVANDER - CALENDULA
MELISSA - ROSEMARY
JUNIPER - BIRCH - LEMON
THYME - SAGE - CYPRESS - GRAPEFRUIT



CAPRI MEN'S CLUB



MAN LINE

Capri Beauty Line has created the Capri Men's Club Line, a simple and complete program that starts from hygiene, prevents the aggressions of daily shaving and the environment, moisturizes the body with smoothing and moisturizing, to close with the specific anti-aging treatment high technology. Texture light, dermatologically tested for the daily needs of male skin.

CODE PRODUCTS

- H 56011 Shaving Gel - Lenitive Protective - 250 ml
- H 56012 Anti-stress Moisturizing Cream - 50 ml
- H 56013 Anti-wrinkle Regenerating Cream - 50 ml
- H 56014 Relax Shower Gel - 250 ml
- H 56015 Beard Balm - Nourishing Conditioner - 250 ml
- H 56016 Body Fluid Cream - Toning Moisturizing - 250 ml

ACTIVE INGREDIENTS

GRAIN AND SILK PROTEINS
AVOCADO OIL - CAFFEINE
ALOE VERA - PANTHENOL
VITAMIN C STABILIZED - VITAMIN E



PERFECT EPIL



PROFESSIONAL DEPILATION LINE

With epilation, superficial skin cells are removed to protect the epidermis. The skin is therefore subject to irritation and red spots and can easily form unpleasant imperfections such as pimples and ingrown hairs. It is therefore important, after each treatment of hair removal, a targeted aesthetic treatment that acts in two phases: rebalancing-soothing and emollient-exfoliating. For a soft and smooth skin like silk, for a long time.

CODE PRODUCTS

- P 57801 After wax Soothing Oil - 500 ml
- P 57805 Lenitive / Retardant After wax Emulsion - 500 ml
- P 57810 Hair Growth Retardant Fluid Amp. 12 ampoules x ml 15

ACTIVE INGREDIENTS

PAPAIN - GYMNEA SILVESTRIS
ALOE VERA - CALENDULA
ZINC OXIDE - CHAMOMILE
BISABOLOL - HYPERIC



SPECIFIC LINE FOR ESTHETIC DEVICE

Born from the need to have specific products to be used with machinery, the line is composed of ultrasound gels enriched with latest generation active ingredients, radiofrequency creams, active fiolides concentrated for electroporators or added to cream or conductive gel to enhance the desired effect. Thanks to the specially studied formulations all products can be efficiently conveyed through: electropores, ultrasound, iontophoresis and hyperbaric oxygen.

CODE PRODUCTS

- P **57001** Conductive Cream for Electro Esthetic Device - 500 ml
- P **57002** Conductive Gel for Electro Esthetic Device - 500 ml
- P **57011** Post treatment Lenitive Solution - 500 ml
- P **57021** Draining / Slimming Conductive Fluid Ampoules
12 ampoules x ml 15
- P **57025** Anti-wrinkle / Firming Conductive Fluid Ampoules
12 ampoules x ml 15

ACTIVE INGREDIENTS

HYALURONIC ACID - VITAMIN PP
VITAMIN A / C / E - HYPERIC - CHAMOMILE
ALOE VERA - CAFFEINE - CARNITINE

PROMOTIONAL MATERIAL



Practical and captivating
SAMPLES (No. 10 References)

- COD. 97051026 Re-plumping Cream Boto Like - Infinity Perfect Lift - ml 3,5
- COD. 97051036 Revitalizing Illuminating Cream - New Skin Sy-Stem Cells - ml 3,5
- COD. 97051055 Oxygenating Renewing Cream - Anti Aging - Caviar & Ret. - ml 3,5
- COD. 97051066 Super Moisturizing Gel - Cream Extra Energy ACE - ml 3,5
- COD. 97051076 Soothing Protective Decongestant Cream - Sensitive Skin - ml 3,5
- COD. 97051164 Contour Cream with Gold and Collagen - Intense Skin Care - ml 2,5
- COD. 97052055 Draining and Slimming Cream - Drenactive - ml 5
- COD. 97052078 Reducing / Draining Therm. Cream - Hot/Cold Effect - Extraperf. - ml 5
- COD. 97051006 Anti - Wrinkle Antioxidant Cream- Orange Blue - ml 3,5
- COD. 97054016 Anti-Wrinkle Cream - Mandelic Complex - ml 3,5



TOWELS SET CBL

1 composition:

- n.1 sponge towel 90x180 cm
 - n.1 towel da 60x100 cm
 - n.2 washcloth 30x30 cm
- in cotton sponge embroidered
COD. 97031

BOWL

Ceramic Bowl "Capri Beauty Line"
size Ø 13x h 7,5 cm
COD. 97030



SHOPPER

Shopper "Capri" cm. 39x27
in Bio greenpool
COD. 97015



CARD CLIENT

Card Anamnesi Client - cardboard
4 pages
COD. 97019



PRODUCT SHEETS (25x25 CM)

- COD. 970045 Probiotic Complex Card (4 pags.)
- COD. 970040 Infinity Perfect Lift Card (4 pags.)
- COD. 970041 New Skin Sy-Stem Cells Card (4 pags.)
- COD. 970042 Anti Aging Caviar & Retinol Card (4 pags.)
- COD. 970044 Intense Skin Care Card (8 pags.)
- COD. 970043 Face Card (20 pags.)
- COD. 970060 Mandelic Complex Card (8 pags.)
- COD. 970051 Drenactive Card (4 pags.)
- COD. 970052 Perfect Body System Card (4 pags.)
- COD. 970053 Extra Performance Card (4 pags.)
- COD. 970054 Body Card (12 pags.)
- COD. 970055 Spa Card (12 pags.)
- COD. 970071 Perfect Epil Card (4 pags.)
- COD. 970076 SUltra Power Tech Card (4 pags.)



BOX

Carton box CBL Card holder
26,5x26,5 x h 4 cm
COD. 970090



BROCHURE PUBLIC

Brochure Capri Home Care Products (36 pgs.) 24x16 cm
COD. 970032



PROMOTIONAL MATERIAL



MANDELIC COMPLEX POSTER
Poster plasticized 70x100 cm
COD. 97066



SPA POSTER
Poster plasticized 50x70 cm
COD. 97056



BODY POSTER
Poster plasticized 50x70 cm
COD. 97055



FACE CAPRI
Poster institutional hardcover 70x100 cm
COD. 97058



POSTER PLASTICIZED 70X100 CM



INFINITY PERFECT LIFT
COD. 97061



NEW SKIN Sy-STEM CELLS
COD. 97062

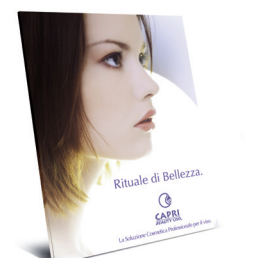


INTENSE SKIN CARE
COD. 97063



DRENACTIVE
COD. 97064

FACE POSTER
Poster plasticized 50x70 cm
COD. 97057



**POSTER INSTITUTIONAL
HARDCOVER**
21x29,7 cm
COD. 97060